



A charming one bedroom apartment with a private garden  
Myrtleside Close, Northwood, HA6 2GB



**Asking Price: £1,325 pcm**

## **A charming one bedroom apartment with a private garden**

Myrtleside Close, Northwood, HA6 2GB

---

• GROUND FLOOR • MODERN THROUGHOUT • ONE BEDROOM • LIVING ROOM • KITCHEN • BATHROOM • UTILITY • LARGE PRIVATE GARDEN • CONVENIENT LOCATION • LARGE STORAGE CLOSET • FURNISHED

---

### **Description**

Located conveniently near the centre of Northwood town, Robsons are pleased to offer this charming ground floor flat that has been finished to a modern standard throughout and benefits from its own private rear garden. Internally, the property has a light and bright reception room off the entrance hall with a large storage closet and French doors allowing access to the garden. There is also a separate modern kitchen and a recently refurbished bathroom finished to a high standard. In addition to this, the double bedroom also provides access to the private garden and offers a range of fitted storage. Viewings of this delightful property are highly recommended.

### **Location**

Northwood provides a range of shopping facilities, a Waitrose supermarket, restaurants and the Metropolitan Line Station providing access to Baker Street and the city beyond. The area has a range of both private and state schools. Places of worship and recreational facilities are also well catered for in the surrounding area and major motorway links to M25 and M1 are nearby.







### Additional Information

- Local Authority: Hillingdon
- Council Tax Band: C
- Energy Efficiency Rating: Band C
- Available Date: 27/06/2022

Energy Efficiency Rating			Environmental Impact (CO <sub>2</sub> ) Rating		
	Current	Potential		Current	Potential
Very energy efficient - lower running costs			Very environmentally friendly - lower CO <sub>2</sub> emissions		
(92-100) <b>A</b>			(92-100) <b>A</b>		
(81-91) <b>B</b>			(81-91) <b>B</b>		
(69-80) <b>C</b>	70	76	(69-80) <b>C</b>	70	78
(55-68) <b>D</b>			(55-68) <b>D</b>		
(39-54) <b>E</b>			(39-54) <b>E</b>		
(21-38) <b>F</b>			(21-38) <b>F</b>		
(1-20) <b>G</b>			(1-20) <b>G</b>		
Not energy efficient - higher running costs			Not environmentally friendly - higher CO <sub>2</sub> emissions		
<b>England, Scotland &amp; Wales</b> EU Directive 2002/91/EC			<b>England, Scotland &amp; Wales</b> EU Directive 2002/91/EC		

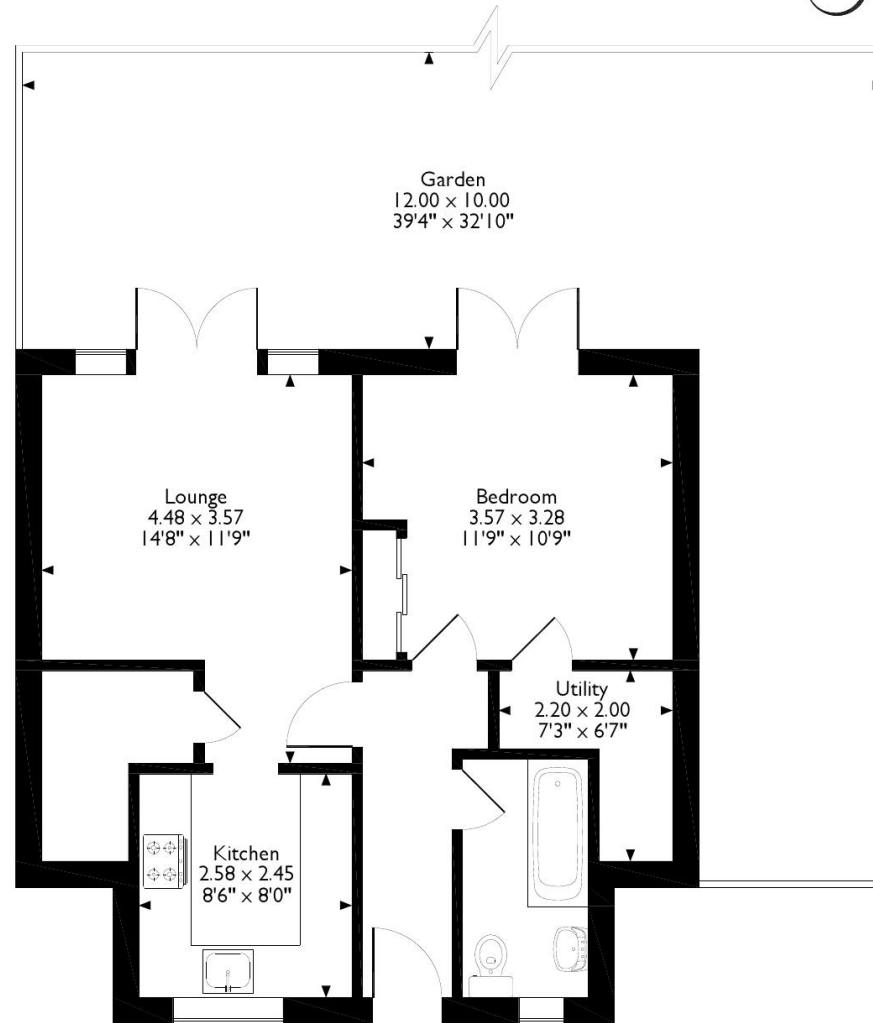
The energy efficiency rating is a measure of the overall efficiency of a home. The higher the rating the more energy efficient the home is and the lower the fuel bills will be.

The environmental impact rating is a measure of a home's impact on the environment in terms of carbon dioxide (CO<sub>2</sub>) emissions. The higher the rating the less impact it has on the environment.





Myrtleside Close, Northwood, Middlesex  
Approximate Gross Internal Area  
49 Sq M/526 Sq Ft



**Ground Floor**

Please note that the location of doors, windows and other items are approximate and this floorplan is to be used for illustrative purposes only. Unauthorized reproduction is prohibited.



REGISTERED OFFICE 2-4 PACKHORSE ROAD, GERRARDS CROSS, BUCKINGHAMSHIRE, ENGLAND, SL9 7QE. COMPANY NO. 07557114. VAT NO. GB211239453