



A Four Bedroom Townhouse in a Gated Development
Carew Road, Northwood, Middlesex HA6 3ND

ROBSONS

Asking Price: £3,500 pcm

A Four Bedroom Townhouse in a Gated Development

Carew Road, Northwood, Middlesex HA6 3ND

• GATED DEVELOPMENT • KITCHEN • FOUR BEDROOMS • THREE BATHROOMS • TWO RECEPTION ROOMS • TWO ENSUITES • BALCONY • DOUBLE GLAZING • DOUBLE GARAGE • PRIVATE REAR GARDEN • FURNISHED/UNFURNISHED

Description

Positioned in a private gated development in the centre of Northwood, this substantial four bedroom three bathroom town house provides over 2400 sqft of accommodation set over four floors. Presented to the market in immaculate condition throughout, this attractive property benefits from large double garage, private rear garden and private balcony ideal for outside entertaining.

Location

Northwood provides a range of shopping facilities including a Waitrose supermarket, a variety of restaurants and other amenities with the Metropolitan Line station providing access to Baker Street and the City. There is a plethora of state and private schooling together with a wide choice of recreational facilities, which include golf courses and fitness centres. The M1, M40 and M25 motorways are also accessible.





Additional Information

- Local Authority: London Borough of Hillingdon
- Council Tax Band: G
- Energy Efficiency Rating: Band C
- Available Date: 02/02/2021

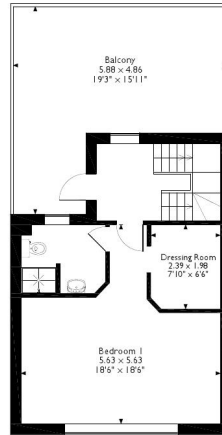
Energy Efficiency Rating			Environmental Impact (CO ₂) Rating		
	Current	Potential		Current	Potential
Very energy efficient - lower running costs			Very environmentally friendly - lower CO ₂ emissions		
(92-100) A			(92-100) A		
(81-91) B			(81-91) B		
(69-80) C	77	84	(69-80) C	73	80
(55-68) D			(55-68) D		
(39-54) E			(39-54) E		
(21-38) F			(21-38) F		
(1-20) G			(1-20) G		
Not energy efficient - higher running costs			Not environmentally friendly - higher CO ₂ emissions		
England, Scotland & Wales EU Directive 2002/91/EC			England, Scotland & Wales EU Directive 2002/91/EC		

The energy efficiency rating is a measure of the overall efficiency of a home. The higher the rating the more energy efficient the home is and the lower the fuel bills will be.

The environmental impact rating is a measure of a home's impact on the environment in terms of carbon dioxide (CO₂) emissions. The higher the rating the less impact it has on the environment.



18 Viceroy Court, 1, Carew Road, Northwood
Approximate Gross Internal Area
227 Sq M/2438 Sq Ft



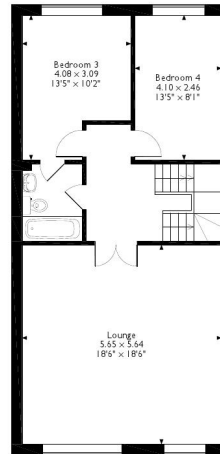
Second Floor



Third Floor



Ground Floor



First Floor

Please note that the location of doors, windows and other items are approximate and this floorplan is to be used for illustrative purposes only. Unauthorized reproduction is prohibited.

Robsons Residential Lettings Limited is a company registered in England and Wales (registered number 07557114) and its Registered Office is 2-4 Packhorse Road, Gerrards Cross, SL9 7QE.



Northwood Lettings Office
3 Maxwell Road, Northwood,
Middlesex HA6 2XY

Tel: 01923 822211
lettings@robsonswb.com

robsonswb.com

