



A Spacious Two Bedroom Apartment in a sought after location
Dove Park ,Hatch End, HA5 4ED

ROBSONS

Asking Price: £1,850 pcm

A Spacious Two Bedroom Apartment in a sought after location

Dove Park ,Hatch End, HA5 4ED

• COMMUNAL ENTRANCE HALL • FIRST FLOOR APARTMENT • ENTRANCE HALL • TWO DOUBLE BEDROOMS • LARGE LIVING ROOM • SHOWER ROOM • KITCHEN • ADDITIONAL SEPERATE W/C • GAS CENTRAL HEATING • UNFURNISHED • GARAGE IN BLOCK

Description

Positioned moments from Hatch End High Street, this first floor apartment offers spacious living accommodation throughout. The property consists of entrance hall, two double bedrooms, both providing ample bedroom storage, a fully fitted modern kitchen with brand new appliances ,a family bathroom with walk in shower, wash basin and W/C, an additional separate W/C room with wash basin and a generously sized living room with access to balcony with views overlooking Dove Park and beyond. The property is provided unfurnished and benefits from use of a garage in a nearby block.

**** An advance reservation payment of one weeks rent is required to secure the property ****

Location

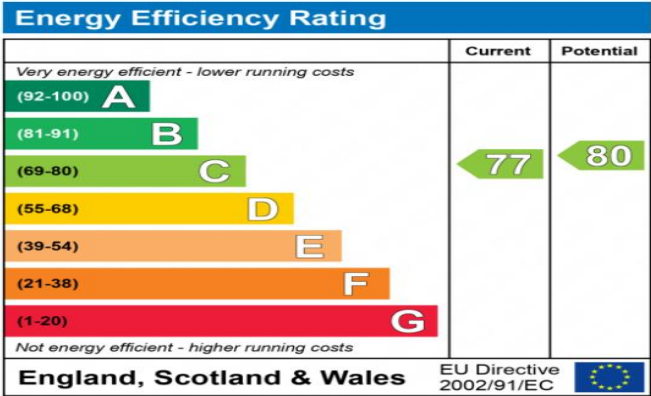
Dove Park is situated within minutes walk of Hatch End which offers a variety of boutique shops, restaurants, coffee houses and popular supermarkets. Transport facilities include local bus links and the Overground at Hatch End rail station, providing a fast and frequent service into the heart of Central London and beyond. The area is well served for primary and secondary schooling, children's parks/playgrounds and recreational facilities.





Additional Information

- District Council: London Borough of Harrow
- Council Tax Band: D
- Deposit Amount: £2,076.00
- Reservation Payment: One weeks rent
- Energy Efficiency Rating: Band C
- Available Date: 30/09/2025



The energy efficiency rating is a measure of the overall efficiency of a home. The higher the rating the more energy efficient the home is and the lower the fuel bills will be.





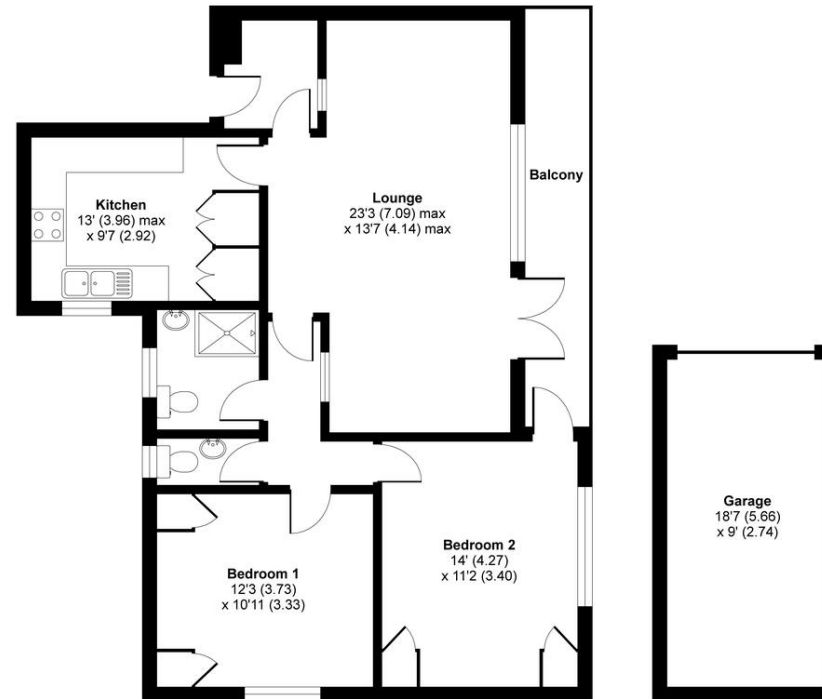
Dove Park, Pinner, HA5

Approximate Area = 858 sq ft / 79.7 sq m

Garage= 168 sq ft / 15.6 sq m

Total = 1026 sq ft / 95.3 sq m

For identification only - Not to scale



FIRST FLOOR



Floor plan produced in accordance with RICS Property Measurement Standards incorporating International Property Measurement Standards (IPMS2 Residential). © nichecom 2021. Produced for Robsons Lettings. REF: 786648

