



A beautiful first floor two bedroom maisonette in a convenient location  
Tolcarne Drive, Pinner, Middlesex HA5 2DN





**Asking Price: £1,650 pcm**

## **A beautiful first floor two bedroom maisonette in a convenient location**

Tolcarne Drive, Pinner, Middlesex HA5 2DN

---

• ENTRANCE HALL • STAIRS TO FIRST FLOOR • LOUNGE/DINING ROOM • MODERN KITCHEN • TWO BEDROOMS • MODERN FAMILY BATHROOM • AMPLE LOFT & CUPBOARD STORAGE • ATTRACTIVE REAR GARDEN • UNFURNISHED

---

### **Description**

Immaculate throughout boasting a modern kitchen and bathroom, this first floor two bedroom maisonette offers spacious living accommodation, with the added benefit of an attractive rear garden. To the ground floor there is an entrance hall with stairs leading to the first floor landing, there is a spacious lounge/ dining room, modern fitted kitchen with a range of units, two double bedrooms (the master boasting fitted wardrobes) and a modern family bathroom. The property also offers ample storage space with loft storage and multiple cupboard space.

**\*\* A holding payment of £380.00 is required to secure this property, which is equivalent to one weeks rent \*\***

### **Location**

Tolcarne Drive is situated on a popular road located just moments from both Pinner and Northwood Hills amenities, which offer a variety of shops, restaurants, coffee houses and popular supermarkets. Transport facilities include local bus links and the Metropolitan Line at both Pinner and Northwood Hills tube stations, which provide a fast and frequent service into the heart of Central London and beyond. The area is well served for primary and secondary schooling which includes nearby Harlyn primary school and Northwood and Haydon secondary schools, there is also a good selection of children's parks/playgrounds and recreational facilities.

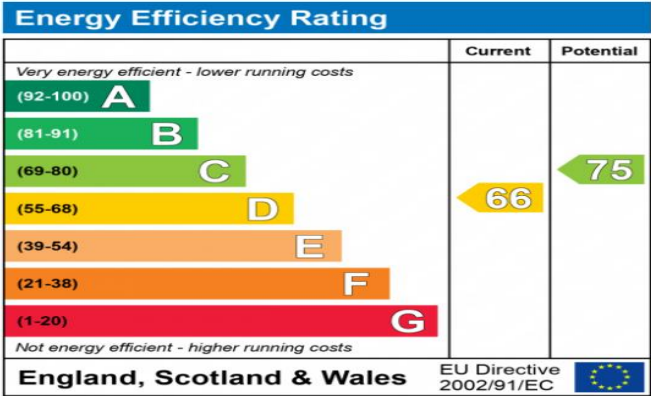






### Additional Information

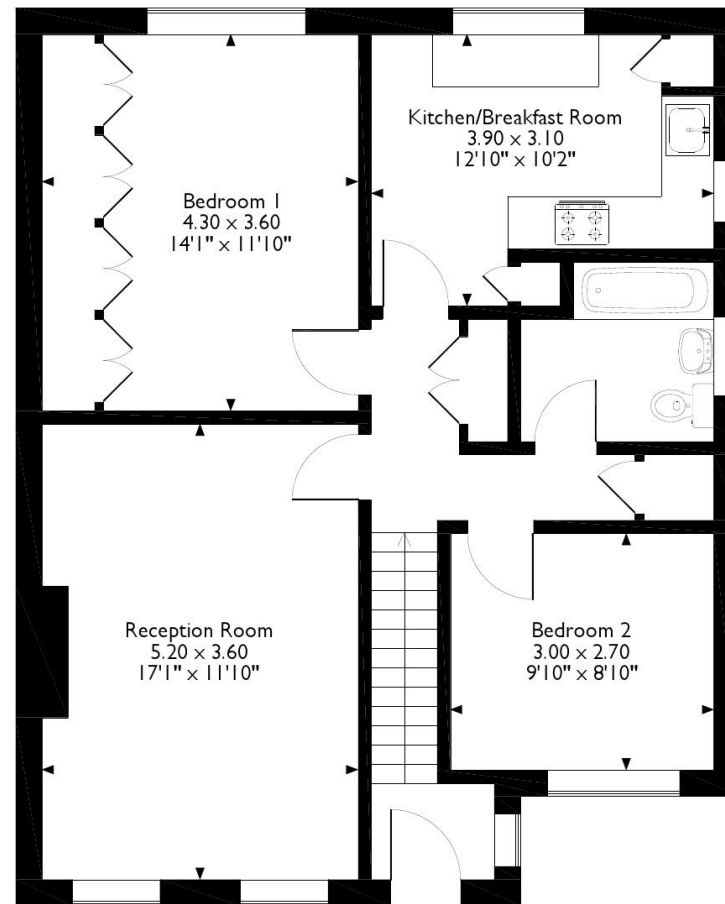
- Local Authority: London Borough of Hillingdon
- Council Tax Band: D
- Deposit Amount: £1,903.00
- Reservation Payment: One weeks rent
- Energy Efficiency Rating: Band D
- Available Date: 17/07/2023



The energy efficiency rating is a measure of the overall efficiency of a home. The higher the rating the more energy efficient the home is and the lower the fuel bills will be.



Tolcarne Drive, Pinner  
Approximate Gross Internal Area  
69 Sq M/740 Sq Ft



Please note that the location of doors, windows and other items are approximate and this floorplan is to be used for illustrative purposes only. Unauthorized reproduction is prohibited.

