



A beautifully presented one bedroom ground floor maisonette  
Mezen Close, Northwood, Middlesex HA6 2DP





**Asking Price: £1,550 pcm**

## **A beautifully presented one bedroom ground floor maisonette**

Mezen Close, Northwood, Middlesex HA6 2DP

---

• ENTRANCE HALL • SITTING/DINING ROOM • KITCHEN • BATHROOM • PRIVATE REAR GARDEN • OFF STREET PARKING AVAILABLE • UNFURNISHED

---

### **Description**

Nestled in a popular and quiet cul-de-sac positioned off Moor Park Road this beautifully presented one bedroom ground floor maisonette has been recently renovated throughout. The property comprises of entrance hallway, bedroom, bathroom, reception room and kitchen. The property is offered unfurnished with an attractive secluded private garden and off street parking.

**\*\* An advance reservation payment of one weeks rent is required to secure this property\*\***

### **Location**

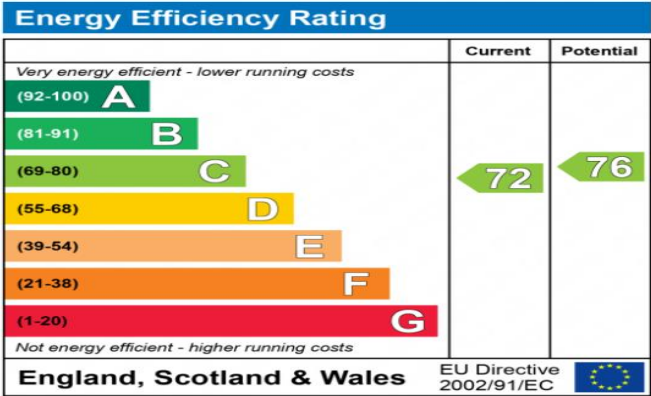
Northwood provides a range of shopping facilities including Waitrose supermarket, a variety of restaurants and other amenities with the Metropolitan Line station providing access to Baker Street and the City. There is a plethora of state and private schooling together with a wide choice of recreational facilities, which include golf courses and fitness centres. The M1, M40 and M25 motorways are also accessible.





Additional Information

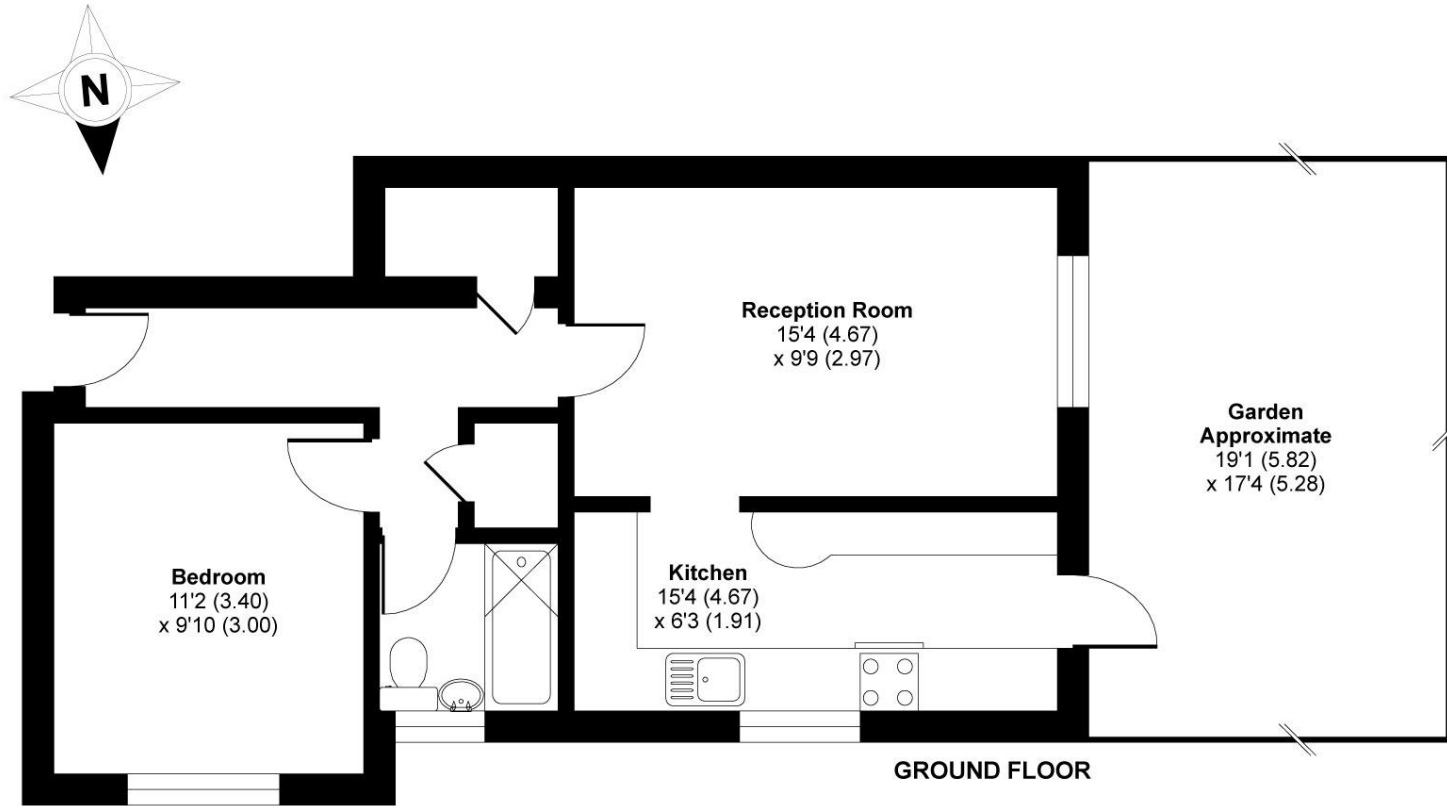
- Local Authority: London Borough of Hillingdon
- Council Tax Band: C
- Deposit Amount: £1,788.00
- Reservation Payment: One weeks rent
- Energy Efficiency Rating: Band C
- Available Date: 15/10/2025



The energy efficiency rating is a measure of the overall efficiency of a home. The higher the rating the more energy efficient the home is and the lower the fuel bills will be.



APPROX. GROSS INTERNAL FLOOR AREA 506 SQ FT 47 SQ METRES



**'For illustrative purposes only - not to scale. The position and size of doors, windows, appliances and other features are approximate only.'**

Whilst every attempt has been made to ensure the accuracy of the floor plan contained here, measurements of doors, windows and rooms are approximate and no responsibility is taken for any error, omission or misstatement. These plans are for representation purposes only as defined by RICS Code of Measuring Practice and should be used as such by any prospective purchaser. Specifically no guarantee is given on the total square footage of the property if quoted on this plan. Any figure given is for initial guidance only and should not be relied on as a basis of valuation.

Copyright nichecom.co.uk 2017 Produced for Robsons REF : 172979

