



A modern two bedroom two bathroom apartment
Melville Court, Northwood, Middlesex HA6 2UZ



Asking Price: £1,595 pcm

A modern two bedroom two bathroom apartment

Melville Court, Northwood, Middlesex HA6 2UZ

• GROUND FLOOR ENTRANCE • RECEPTION ROOM • KITCHEN/BREAKFAST ROOM • SHOWER ROOM • BATHROOM • TWO BEDROOMS • BALCONY • COMMUNAL GARDENS • DOUBLE GLAZING • GARAGE WITH RESTRICTED USE • UNFURNISHED

Description

Positioned only moments from the centre of Northwood this modern two bedroom first floor apartment offers spacious living room filled with natural light, two double bedrooms, two bathrooms and modern fitted kitchen. The apartment is finished to a high standard throughout, the balcony over looks the well manicured communal gardens. The property is offered with a garage with restricted use.

Location

Northwood provides a range of shopping facilities, a Waitrose supermarket, restaurants and the Metropolitan Line Station providing access to Baker Street and the city beyond. The area has a range of both private and state schools. Places of worship and recreational facilities are also well catered for in the surrounding area and major motorway links to M25 and M1 are nearby.





Additional Information

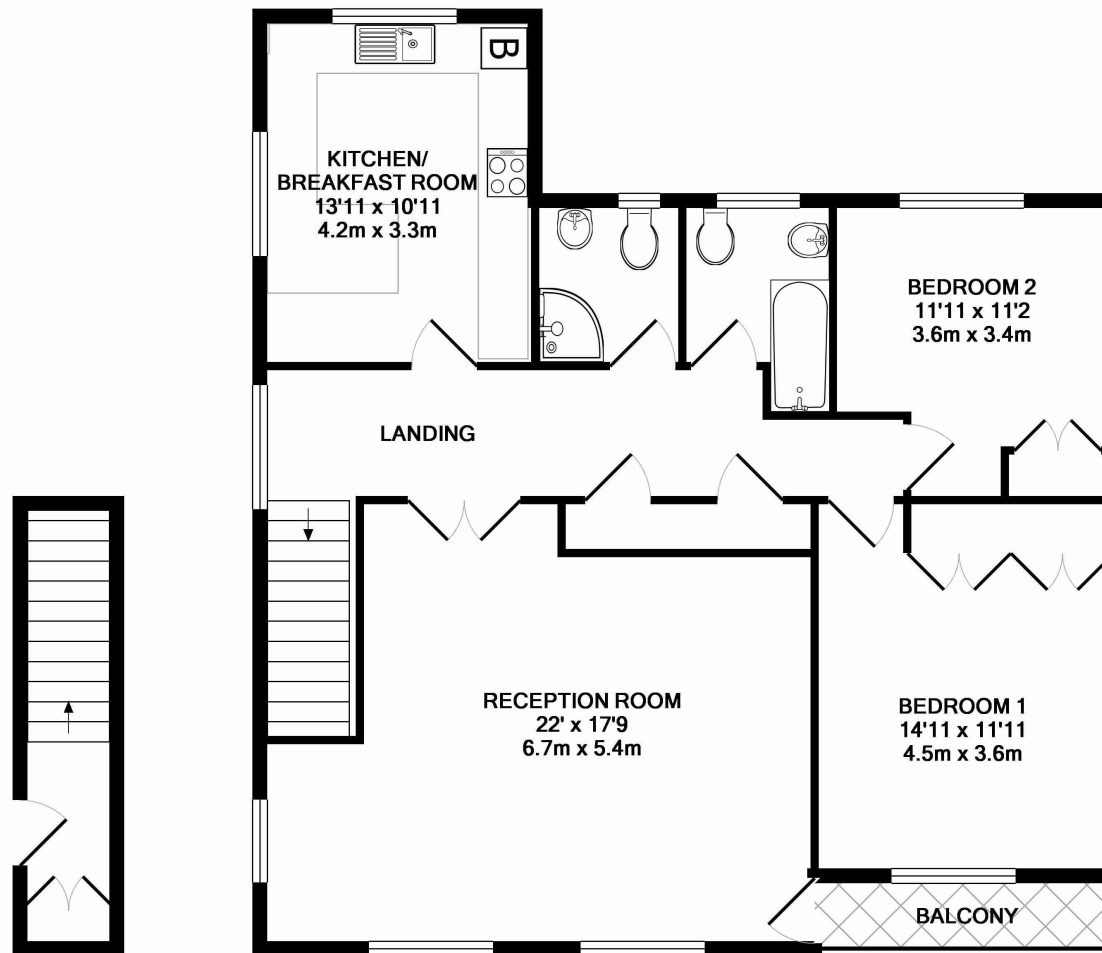
- Local Authority: London Borough of Hillingdon
- Council Tax: Band E
- Energy Efficiency Rating: Band C
- Available Date: 01/11/2021

Energy Efficiency Rating			Environmental Impact (CO ₂) Rating		
	Current	Potential		Current	Potential
Very energy efficient - lower running costs			Very environmentally friendly - lower CO ₂ emissions		
(92-100) A			(92-100) A		
(81-91) B			(81-91) B		
(69-80) C		78	(69-80) C	66	78
(55-68) D	69		(55-68) D		
(39-54) E			(39-54) E		
(21-38) F			(21-38) F		
(1-20) G			(1-20) G		
Not energy efficient - higher running costs			Not environmentally friendly - higher CO ₂ emissions		
England & Wales			England & Wales		
EU Directive 2002/91/EC			EU Directive 2002/91/EC		

The energy efficiency rating is a measure of the overall efficiency of a home. The higher the rating the more energy efficient the home is and the lower the fuel bills will be.

The environmental impact rating is a measure of a home's impact on the environment in terms of carbon dioxide (CO₂) emissions. The higher the rating the less impact it has on the environment.





ENTRANCE FLOOR
APPROX. FLOOR
AREA 68 SQ.FT.
(6.3 SQ.M.)

1ST FLOOR
APPROX. FLOOR
AREA 1051 SQ.FT.
(97.6 SQ.M.)

TOTAL APPROX. FLOOR AREA 1119 SQ.FT. (103.9 SQ.M.)

Whilst every attempt has been made to ensure the accuracy of the floor plan contained here, measurements of doors, windows, rooms and any other items are approximate and no responsibility is taken for any error, omission, or mis-statement. This plan is for illustrative purposes only and should be used as such by any prospective purchaser. The services, systems and appliances shown have not been tested and no guarantee as to their operability or efficiency can be given
Made with Metropix ©2016



Middlesex | Hertfordshire | Buckinghamshire

Robsons Residential Lettings Limited is a company registered in England and Wales (registered number 07557114) and its Registered Office is 2-4 Packhorse Road, Gerrards Cross, SL9 7QE.



Northwood Lettings Office
3 Maxwell Road, Northwood,
Middlesex HA6 2XY

Tel: 01923 822211
lettings@robsonswb.com

robsonswb.com