



A 3/4 bedroom chalet bungalow in a quiet location  
Highfield Crescent, Northwood, Middlesex HA6 1EZ



**Asking Price: £3,000 pcm**

## **A 3/4 bedroom chalet bungalow in a quiet location**

Highfield Crescent, Northwood, Middlesex HA6 1EZ

---

• ENTRANCE HALL • THREE RECEPTION ROOMS • KITCHEN AND UTILITY ROOM • CLOAKROOM • MAIN BEDROOM WITH FITTED WARDROBES AND ENSUITE • TWO FURTHER BEDROOMS • BATHROOM • REAR GARDEN • DRIVEWAY • UNFURNISHED

---

### **Description**

A very well presented three/four bedroom detached chalet bungalow located on a quiet road in Northwood. The property has been recently repainted throughout and comprises, entrance hall, two front aspect reception rooms, ground floor W/C, rear aspect lounge, fitted kitchen with separate utility room, fourth reception room/ bedroom, master bedroom with fitted wardrobes and ensuite shower room, two further bedrooms with fitted wardrobes and a family bathroom. The property also features a front driveway and a well-manicured rear garden with patio area.

**\*\* An advance reservation payment of one weeks rent is required to secure the property \*\***

### **Location**

Northwood provides a range of shopping facilities, a Waitrose supermarket, restaurants and the Metropolitan Line Station providing access to Baker Street and the city beyond. The area has a range of both private and state schools. Places of worship and recreational facilities are also well catered for in the surrounding area and major motorway links to M25 and M1 are nearby.

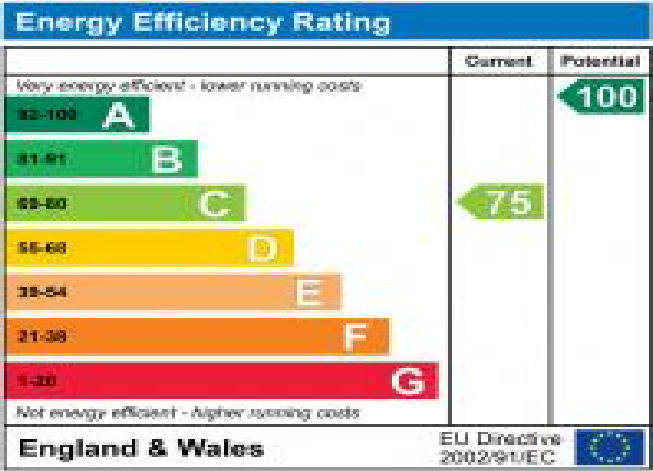






### Additional Information

- Local Authority: Hillingdon
- Council Tax Band: E
- Deposit Amount:
- Reservation Payment: One weeks rent
- Energy Efficiency Rating: Band C
- Available Date: 16/08/2024



Approximate Gross Internal Area  
 Ground Floor = 88.4 sq m / 951 sq ft  
 First Floor = 68.4 sq m / 736 sq ft  
 Garage = 5.7 sq m / 61 sq ft  
 Total = 162.5 sq m / 1,748 sq ft

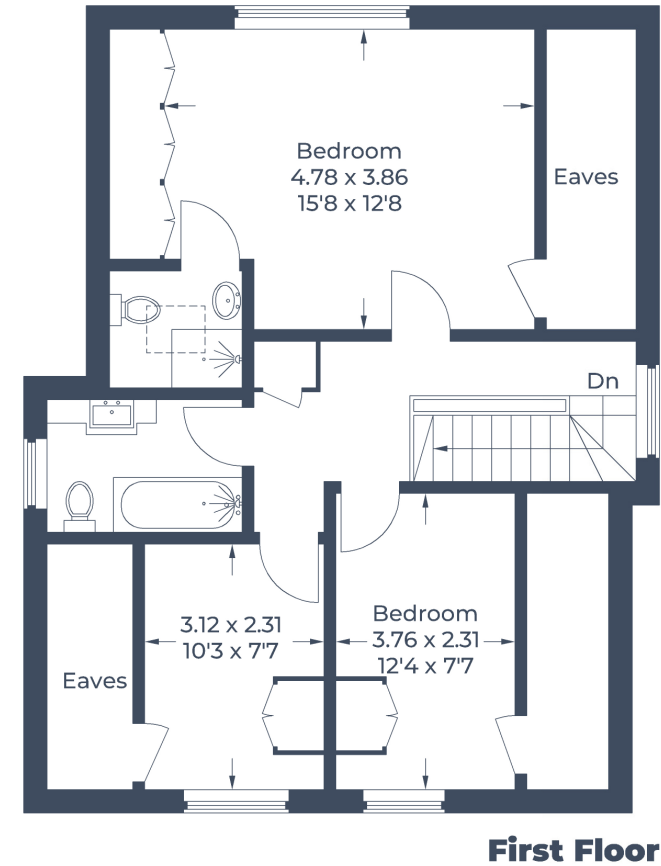
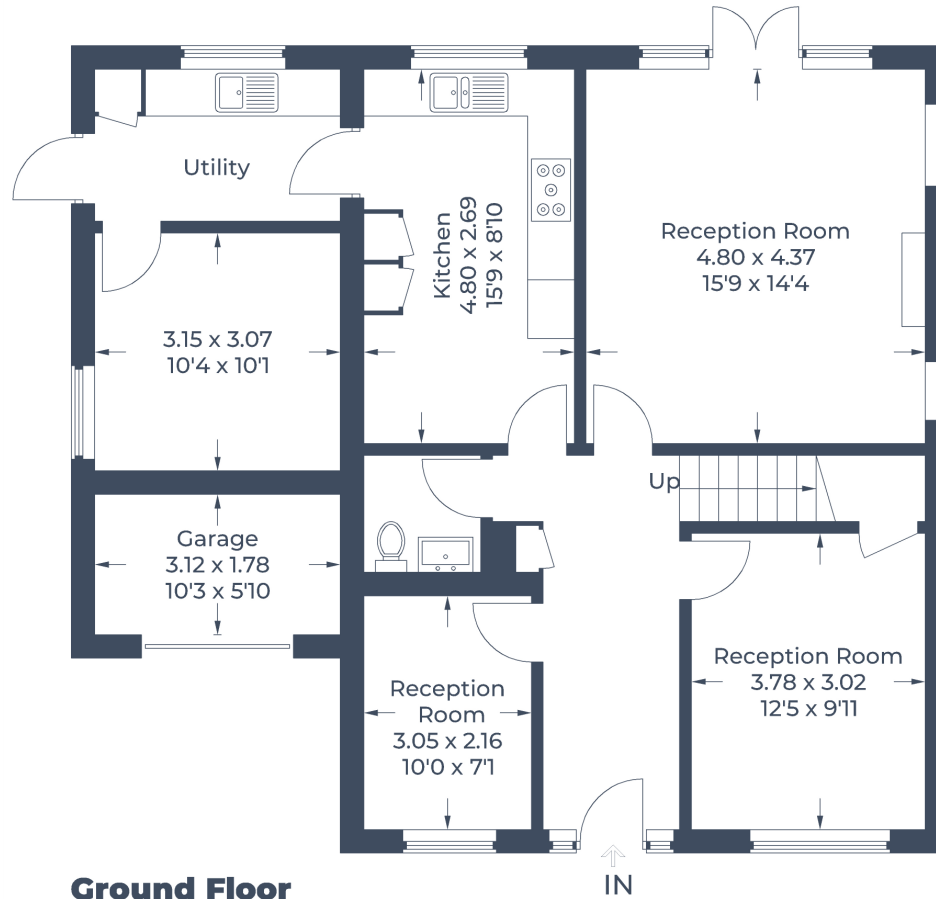


Illustration for identification purposes only,  
 measurements are approximate, not to scale.  
 © CJ Property Marketing Produced for Robsons

