



A four bedroom detached chalet bungalow on the Eastbury Farm Estate
The Roughs, Northwood, Middlesex HA6 3DE



Asking Price: £5,000 pcm

A four bedroom detached chalet bungalow on the Eastbury Farm Estate

The Roughs, Northwood, Middlesex HA6 3DE

• RECEPTION HALL • LIVING ROOM OPEN PLAN TO KITCHEN • KITCHEN & UTILITY ROOM PLUS CLOAKROOM • FURTHER RECEPTION ROOM • MAIN BEDROOM WITH WALK IN WARDROBE AND ENSUITE • TWO FURTHER BEDROOMS WITH ENSUITES • FIRST FLOOR - BEDROOM WITH ENSUITE • REAR GARDEN • FURNISHED

Description

This beautifully presented four-bedroom detached chalet bungalow is situated in the sought-after Eastbury Farm Estate in Northwood. Spread across two floors, the property comprises an inviting entrance hall, a spacious front lounge, and an open-plan kitchen and living room. There are four generously sized double bedrooms, each with its own ensuite bathroom and built-in storage. Additional features include a guest W/C and a utility room. Outside, you'll find a large front driveway and a well-maintained rear garden. Outbuilding not included in the tenancy

**** An advance reservation payment of one weeks rent is required to secure the property ****

Location

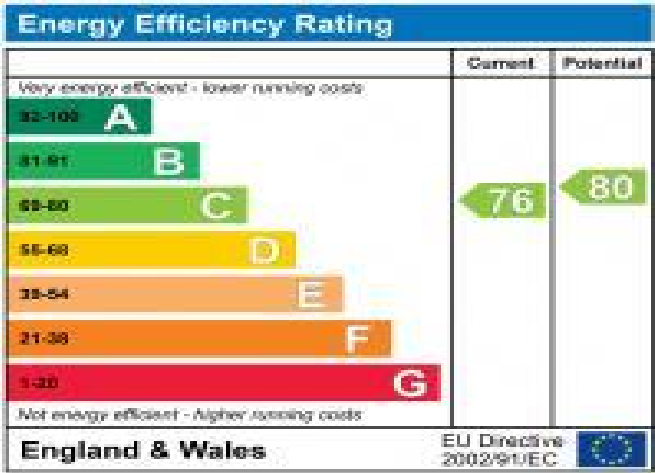
Northwood provides a range of shopping facilities including a Waitrose supermarket, a variety of restaurants and other amenities with the Metropolitan Line station providing access to Baker Street and the City. There is a plethora of state and private schooling together with a wide choice of recreational facilities, which include golf courses and fitness centres. The M1, M40 and M25 motorways are also accessible.



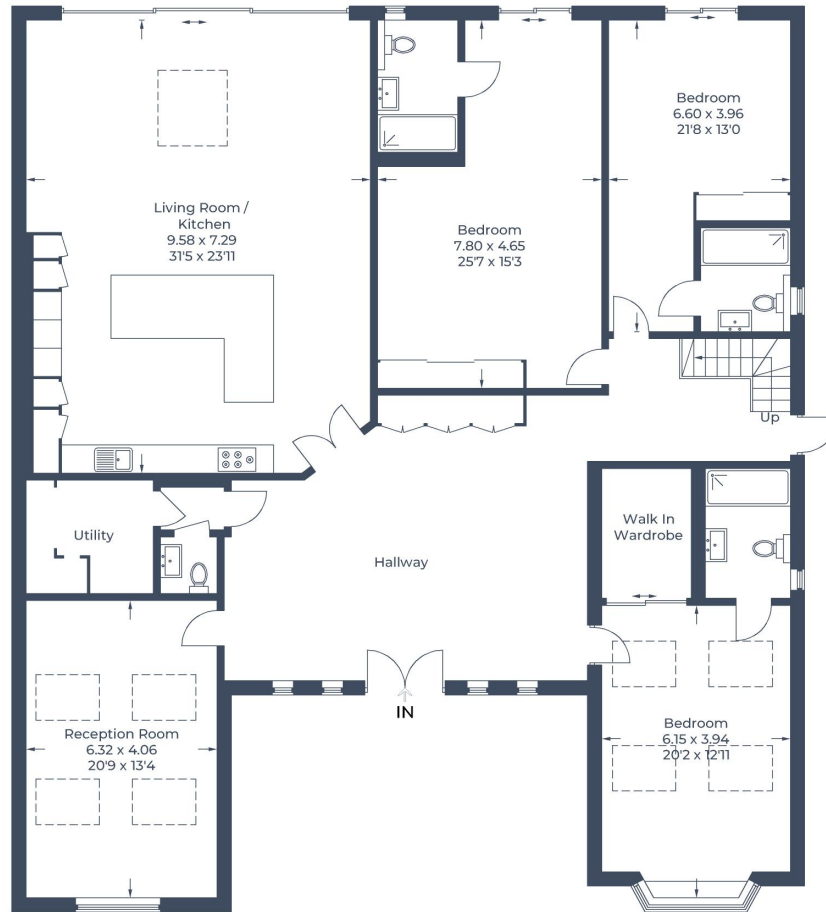


Additional Information

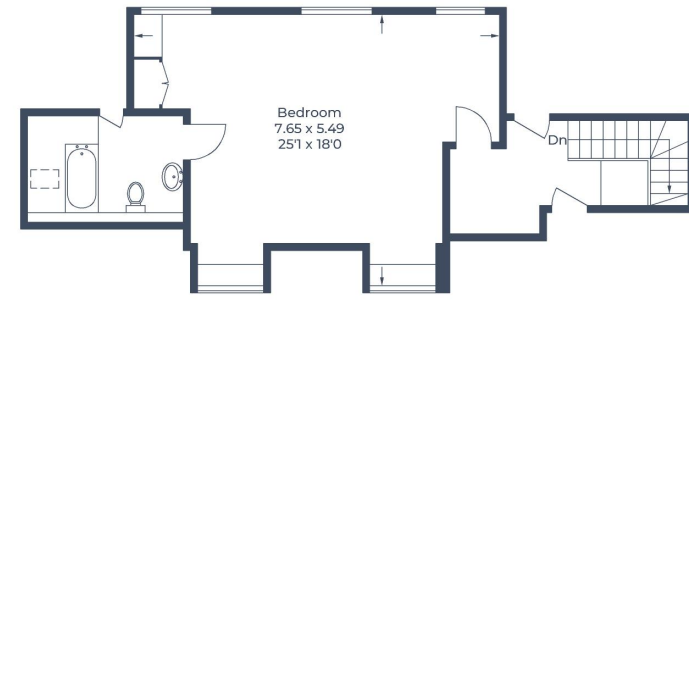
- Local Authority: Three Rivers
- Council Tax Band: G
- Deposit Amount: £6,923.00
- Reservation Payment: One weeks rent
- Energy Efficiency Rating: Band C
- Available Date: 24/10/2025



Approximate Gross Internal Area
 Ground Floor = 263.8 sq m / 2,839 sq ft
 Loft Room = 52.1 sq m / 561 sq ft
 Total = 315.9 sq m / 3,400 sq ft



Ground Floor



Loft Room

Illustration for identification purposes only,
 measurements are approximate, not to scale.
 © CJ Property Marketing Produced for Robsons

