



A spacious 3/4 bedroom duplex apartment close to Northwood town centre
Hallowell Road, Northwood, Middlesex HA6 1DT

ROBSONS

Asking Price: £2,000 pcm

A spacious 3/4 bedroom duplex apartment close to Northwood town centre

Hallowell Road, Northwood, Middlesex HA6 1DT

• FRONT DOOR AND STAIRS TO FIRST FLOOR • ENTRANCE HALL • LOUNGE • DINING ROOM / FOURTH BEDROOM • FITTED KITCHEN • BATHROOM AND SEPARATE SHOWER ROOM • BEDROOM • SECOND FLOOR - TWO BEDROOMS AND EAVES STORAGE • ONE PARKING SPACE • PRIVATE REAR GARDEN

Description

This spacious 3/4 bedroom duplex apartment on Hallowell Road in Northwood offers a perfect blend of comfort and convenience. The property features an inviting entrance hall that leads to a bright living/dining room, ideal for relaxation and entertaining. Two bedrooms are situated on the first floor, with an additional two bedrooms on the second floor, providing plenty of space for families or guests. The modern kitchen is well equipped and there are two bathrooms for added convenience. Outside, enjoy a private rear garden and an allocated parking space. A wonderful opportunity for spacious living in a sought after location.

**** An advance reservation payment of one weeks rent is required to secure the property ****

Location

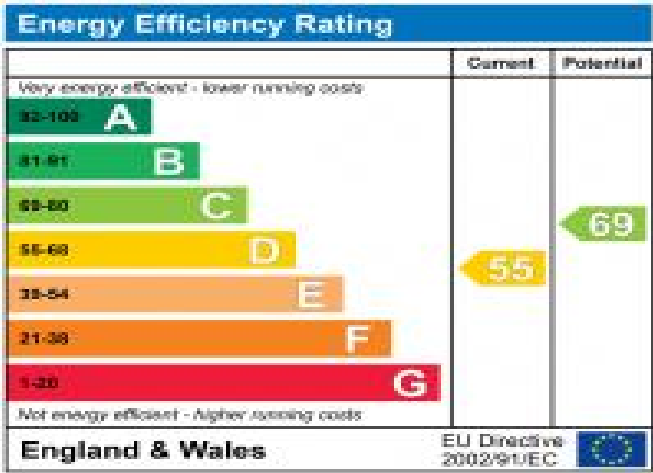
Northwood provides a range of shopping facilities including a Waitrose supermarket, a variety of restaurants and other amenities with the Metropolitan Line station providing access to Baker Street and the City. There is a plethora of state and private schooling together with a wide choice of recreational facilities, which include golf courses and fitness centres. The M1, M40 and M25 motorways are also accessible.



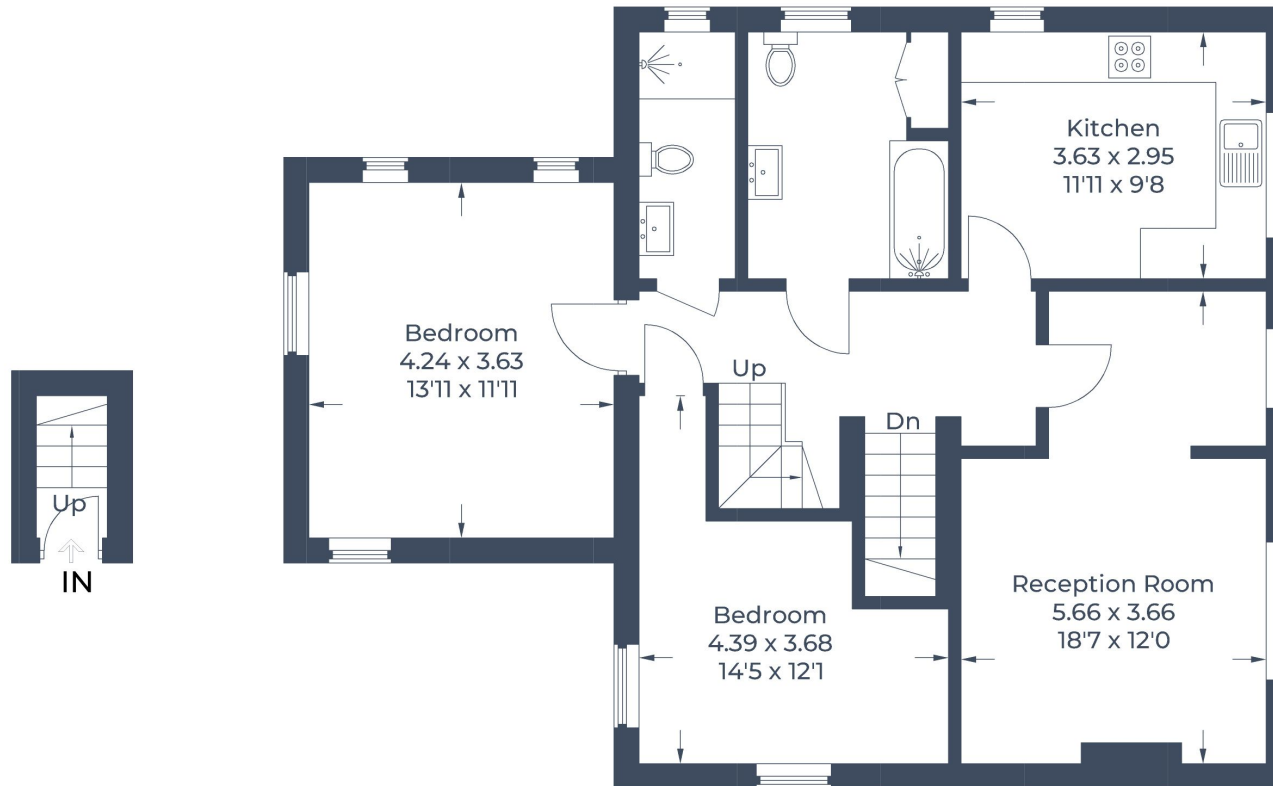


Additional Information

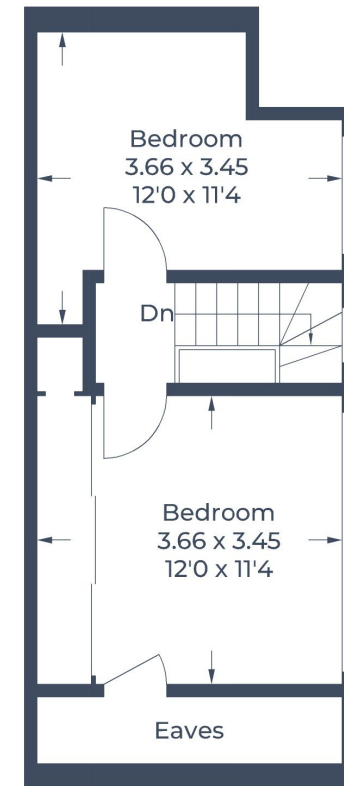
- Local Authority: Hillingdon
- Council Tax Band: D
- Deposit Amount: £2,307.00
- Reservation Payment: One weeks rent
- Energy Efficiency Rating: Band D
- Available Date: 08/11/2024



Approximate Gross Internal Area
 Ground Floor = 1.5 sq m / 16 sq ft
 First Floor = 82.4 sq m / 887 sq ft
 Second Floor = 30.7 sq m / 330 sq ft
 Total = 114.6 sq m / 1,233 sq ft
 (Including Eaves)



Ground Floor First Floor



Second Floor

Illustration for identification purposes only,
 measurements are approximate, not to scale.
 © CJ Property Marketing Produced for Robsons

