



A well presented character three bedroom converted apartment
The Drive, Northwood, Middlesex HA6 1HP



Asking Price: £1,900 pcm

A well presented character three bedroom converted apartment

The Drive, Northwood, Middlesex HA6 1HP

• ENTRANCE HALLWAY • LIVING/DINING ROOM • MODERN FITTED KITCHEN • MASTER BEDROOM WITH ENSUITE SHOWER ROOM • TWO FURTHER BEDROOMS • FAMILY BATHROOM • LARGE PRIVATE GARDEN • GARAGE • AMPLE OFF STREET PARKING

Description

A well presented character three bedroom converted apartment offered to a high standard. Benefitting from it's own large private garden and views overlooking Haste Hill Golf Club. The property is located within close proximity of Northwood and Northwood Hills town centres, both offering a wide variety of shops, restaurants, supermarkets and the Metropolitan Line Station. ** 3D VIRTUAL VIEWINGS PLEASE CALL THE OFFICE TO ARRANGE**

Location

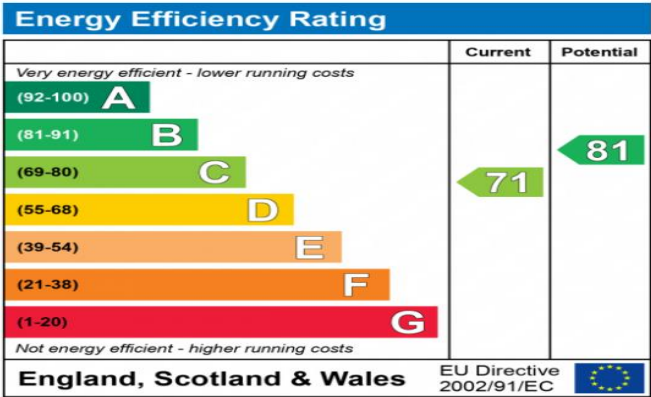
Northwood provides a range of shopping facilities, a Waitrose supermarket, restaurants and the Metropolitan Line Station providing access to Baker Street and the city beyond. The area has a range of both private and state schools. Places of worship and recreational facilities are also well catered for in the surrounding area and major motorway links to M25 and M1 are nearby.



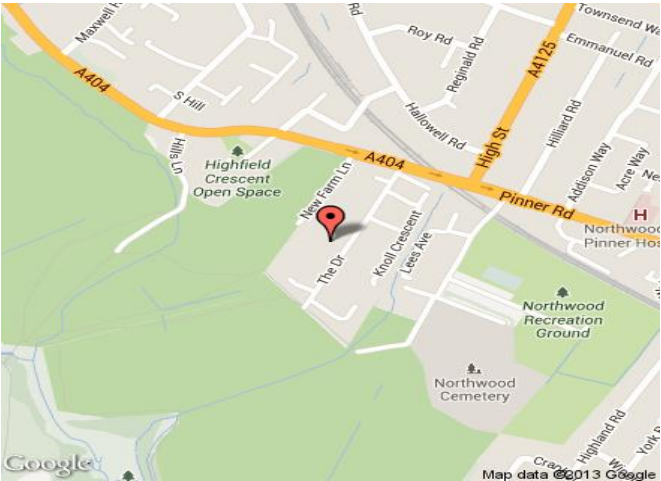


Additional Information

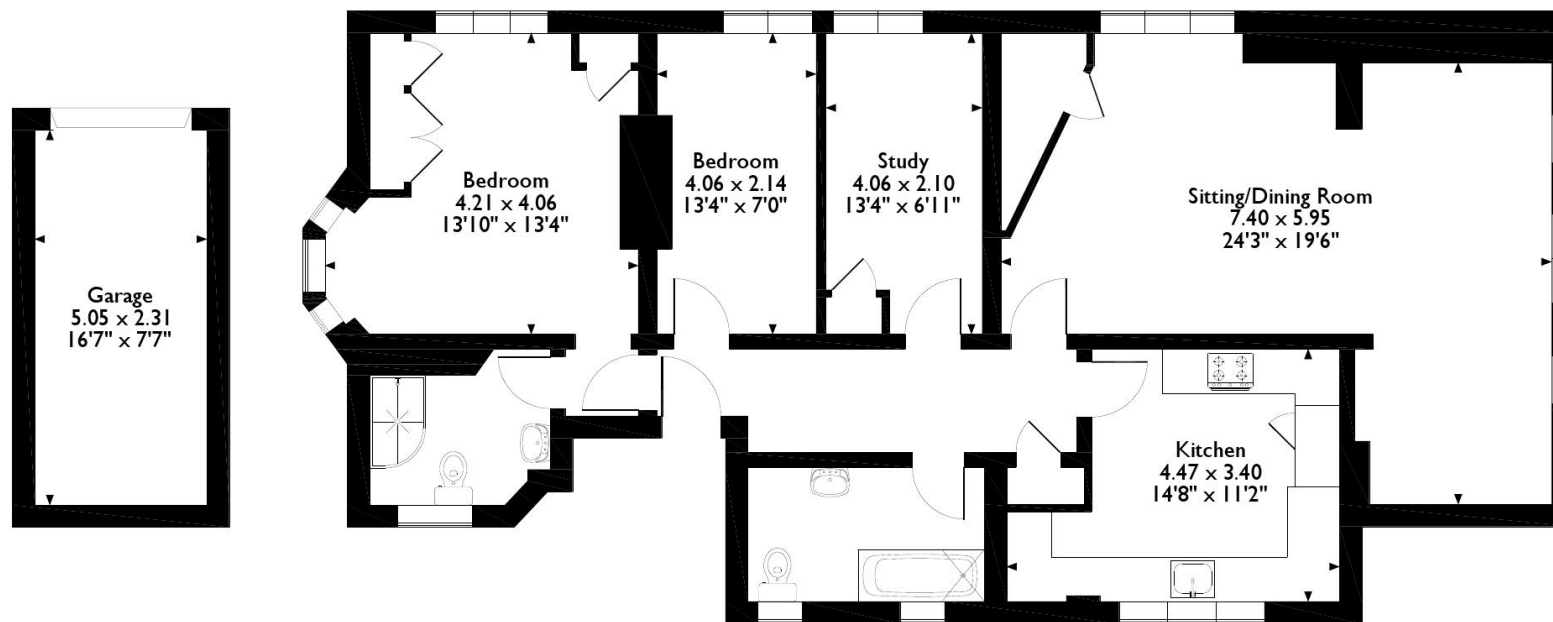
- Local Authority: Hillingdon
- Council Tax Band: E
- Energy Efficiency Rating: Band C
- Available Date: 01/04/2021



The energy efficiency rating is a measure of the overall efficiency of a home. The higher the rating the more energy efficient the home is and the lower the fuel bills will be.



Flat 2 46 The Drive, Northwood
 Approximate Gross Internal Area
 Main House = 109 Sq M/1172 Sq Ft
 Garage = 12 Sq M/126 Sq Ft



First Floor

Please note that the location of doors, windows and other items are approximate and this floorplan is to be used for illustrative purposes only. Unauthorized reproduction is prohibited.

