



A spacious two double bedroom ground floor maisonette  
Abbey Close, Pinner, Middlesex HA5 2AW

**ROBSONS**



**Asking Price: £1,650 pcm**

## **A spacious two double bedroom ground floor maisonette**

Abbey Close, Pinner, Middlesex HA5 2AW

---

• ENTRANCE HALLWAY • LOUNGE • KITCHEN • BEDROOM ONE • BEDROOM TWO • BATHROOM • PARKING • GARDEN • GARAGE • DOUBLE GLAZING • PART FURNISHED

---

### **Description**

A spacious two double bedroom ground floor maisonette, boasting an attractive rear garden and garage in a nearby block. The property enjoys a large lounge/dining room and separate kitchen to the rear aspect, both with single doors opening out onto the attractive rear garden. Completing the property are two double bedrooms and a shower room.

**\*\* An advance reservation payment of one weeks rent is required to secure this property\*\***

### **Location**

Abbey Close is located in a leafy, peaceful cul-de-sac just a few moments walk from local amenities including a Tesco's superstore. Pinner, Northwood Hills and Hatch End can all be found within close proximity offering a variety of boutique shops, restaurants, coffee houses and popular supermarkets. Transport facilities include local bus links and the Metropolitan Line at Pinner and Northwood hill stations, providing a fast and frequent service into the heart of Central London and beyond. The area is well served for primary and secondary schooling, children's parks/playgrounds and recreational facilities.



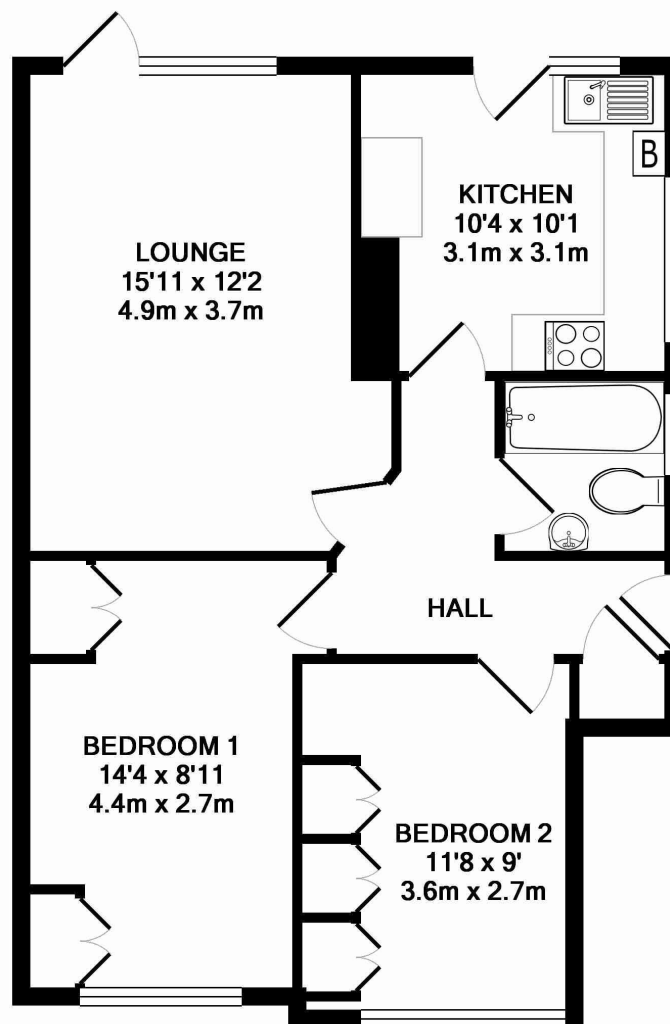


### Additional Information

- Local Authority: London Borough of Harrow
- Council Tax Band: D
- Deposit Amount: £1,903.00
- Reservation Payment: One weeks rent
- Energy Efficiency Rating: Band C
- Available Date: 22/11/2024







**TOTAL APPROX. FLOOR AREA 612 SQ.FT. (56.8 SQ.M.)**

Whilst every attempt has been made to ensure the accuracy of the floor plan contained here, measurements of doors, windows, rooms and any other items are approximate and no responsibility is taken for any error, omission, or mis-statement. This plan is for illustrative purposes only and should be used as such by any prospective purchaser. The services, systems and appliances shown have not been tested and no guarantee as to their operability or efficiency can be given  
Made with Metropix ©2016



REGISTERED OFFICE 2-4 PACKHORSE ROAD, GERRARDS CROSS, BUCKINGHAMSHIRE, ENGLAND, SL9 7QE. COMPANY NO. 07557114. VAT NO. GB211239453