



A one bedroom ground floor apartment in a convenient location for amenities
Anthus Mews, Northwood, Middlesex HA6 2GX



Asking Price: £1,500 pcm

A one bedroom ground floor apartment in a convenient location for amenities

Anthus Mews, Northwood, Middlesex HA6 2GX

• ENTRANCE HALL • LIVING ROOM • KITCHEN/DINING ROOM • BEDROOM WITH FITTED WARDROBE • BATHROOM • COMMUNAL GROUNDS • PARKING PERMIT • PART FURNISHED

Description

A generously sized one-bedroom ground floor apartment ideally situated within close proximity to Northwood's Metropolitan Line station. The accommodation includes an entrance hall, a bright and spacious living room, a well-proportioned bedroom, a fitted kitchen, a bathroom and two useful hallway storage cupboards. The property also benefits from a parking permit, allowing use of the designated parking bays.

**** An advance reservation payment of one weeks rent is required to secure the property ****

Location

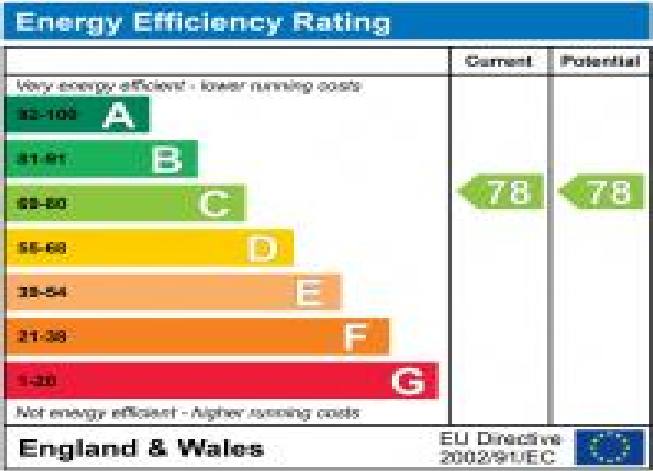
Northwood provides a range of shopping facilities including a Waitrose supermarket, a variety of restaurants and other amenities with the Metropolitan Line station providing access to Baker Street and the City. There is a plethora of state and private schooling together with a wide choice of recreational facilities, which include golf courses and fitness centres. The M1, M40 and M25 motorways are also accessible.





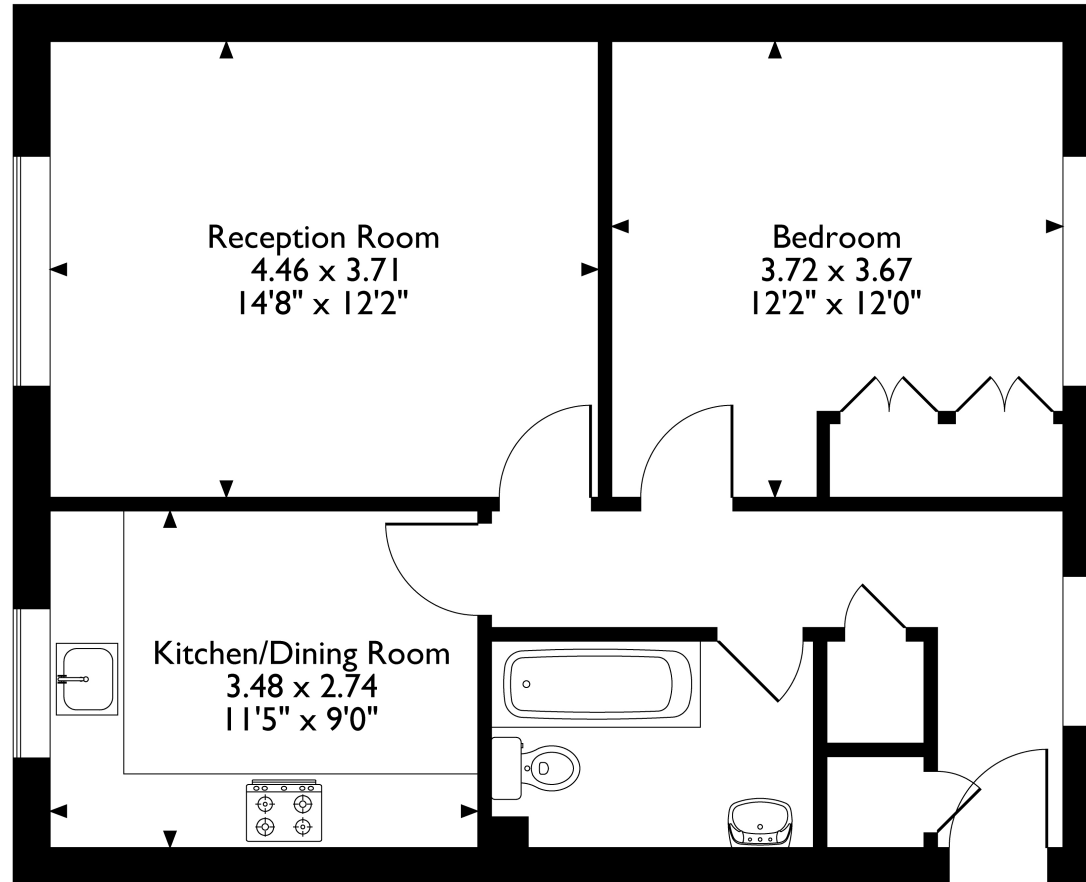
Additional Information

- Local Authority: Hillingdon
- Council Tax Band: D
- Deposit Amount: £1,730.00
- Reservation Payment: One weeks rent
- Energy Efficiency Rating: Band C
- Available Date: 08/07/2025



Anthus Mews, Northwood, HA6 2GX

Approximate Gross Internal Area 54 Sq M/581 Sq Ft



Ground Floor

Please note that the location of doors, windows and other items are approximate and this floorplan is to be used for illustrative purposes only. Unauthorized reproduction is prohibited.

