



A beautifully renovated three bedroom ground floor maisonette
The Glen, Northwood, Middlesex HA6 2UP

ROBSONS

Asking Price: £2,800 pcm

A beautifully renovated three bedroom ground floor maisonette

The Glen, Northwood, Middlesex HA6 2UP

-
- ENTRANCE HALL • LIVING ROOM • FITTED KITCHEN • BEDROOM ONE WITH ENSUITE SHOWER ROOM • TWO FURTHER BEDROOMS • BATHROOM • COMMUNAL GROUNDS • GARAGE IN A NEARBY BLOCK • ON STREET PERMIT PARKING • UNFURNISHED
-

Description

A beautifully renovated and redesigned three-bedroom ground floor maisonette, ideally situated within a sought-after development in Northwood. Located just moments from the high street, this exceptional property comprises an entrance hall with ample storage, a spacious master bedroom with en-suite bathroom, two further bedrooms, and a modern family bathroom. The bright living room features patio doors opening onto a private patio area, while the fully equipped kitchen provides a useful secondary entrance leading to an external communal space. Finished to a high specification throughout, the property also benefits from a garage in a nearby block, with on-street permit parking available.

** An advance reservation payment of one weeks rent is required to secure the property **

Location

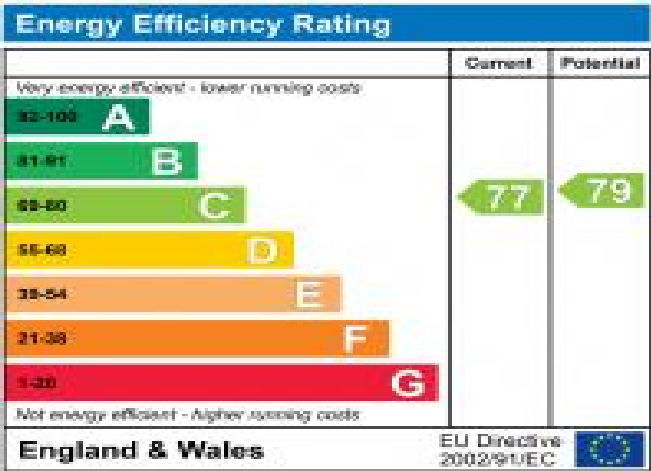
Northwood provides a range of shopping facilities including a Waitrose supermarket, a variety of restaurants and other amenities with the Metropolitan Line station providing access to Baker Street and the City. There is a plethora of state and private schooling together with a wide choice of recreational facilities, which include golf courses and fitness centres. The M1, M40 and M25 motorways are also accessible.





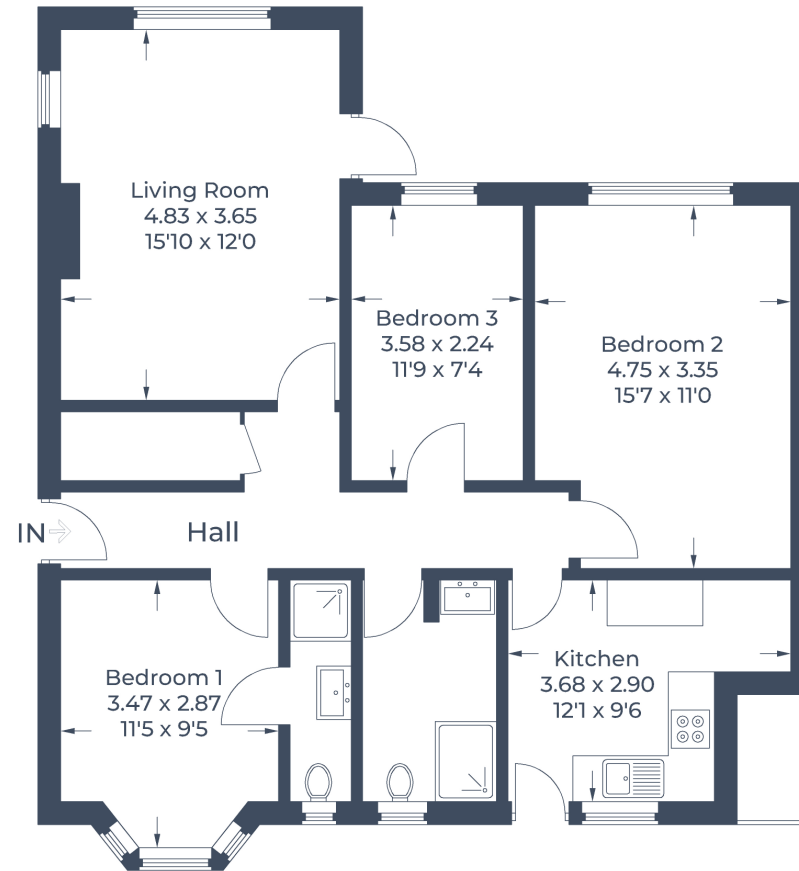
Additional Information

- Local Authority: Hillingdon
- Council Tax Band: E
- Deposit Amount: £3,230.00
- Reservation Payment: One weeks rent
- Energy Efficiency Rating: Band C
- Available Date: 08/05/2026





Approximate Gross Internal Area = 82.4 sq m / 887 sq ft



Ground Floor

Illustration for identification purposes only,
measurements are approximate, not to scale.

© CJ Property Marketing

