



A well presented three bedroom mid terraced house
Frithwood Avenue, Northwood, Middlesex HA6 3LX



Asking Price: £2,595 pcm

A well presented three bedroom mid terraced house

Frithwood Avenue, Northwood, Middlesex HA6 3LX

• ENTRANCE HALLWAY • FITTED KITCHEN • LIVING/DINING ROOM • CONSERVATORY • TWO DOUBLE BEDROOMS MASTER WITH ENSUITE SHOWER ROOM • STUDY/BEDROOM THREE • MODERN FITTED FAMILY BATHROOM • PRIVATE REAR GARDEN • DOUBLE GLAZED • ALLOCATED PARKING ON SHARED DRIVEWAY • UNFURNISHED

Description

This delightful mid-terrace three-bedroom house on Frithwood Avenue, Northwood, combines modern living with comfort. The ground floor features a well-equipped kitchen with appliances, a spacious living room, and a versatile ground floor bedroom. A bright conservatory leads to a private rear garden, perfect for outdoor entertaining. Upstairs, you'll find a master bedroom with an ensuite bathroom, another bedroom, and a family bathroom. Additional highlights include a shared carriage driveway with available parking. Ideal for families or those looking for a tranquil neighborhood.

**** An advance reservation payment of one weeks rent is required to secure the property ****

Location

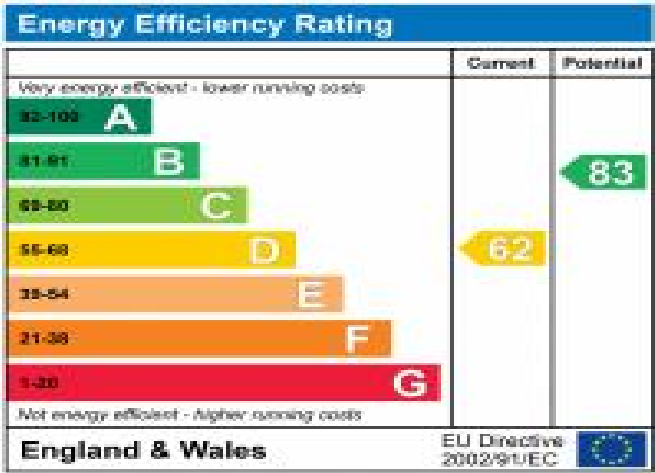
Northwood provides a range of shopping facilities including Waitrose supermarket, a variety of restaurants and other amenities with the Metropolitan Line station providing access to Baker Street and the City. There is a plethora of state and private schooling together with a wide choice of recreational facilities, which include golf courses and fitness centres. The M1, M40 and M25 motorways are also accessible.



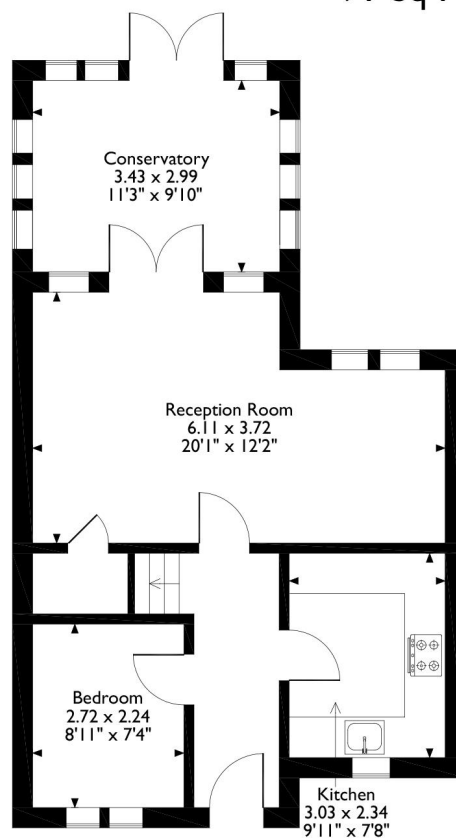


Additional Information

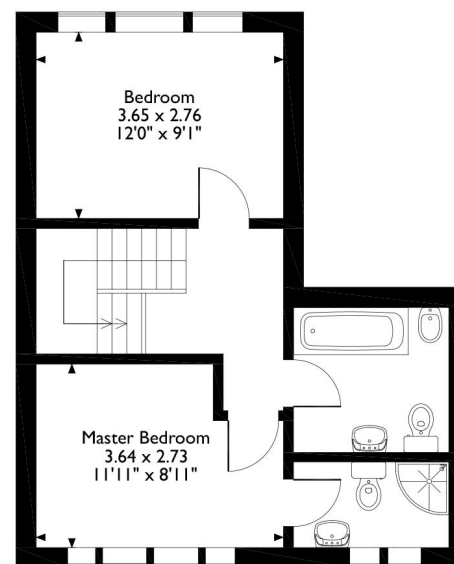
- Local Authority: Hillingdon
- Council Tax Band: E
- Deposit Amount: £2,994.00
- Reservation Payment: One weeks rent
- Energy Efficiency Rating: Band D
- Available Date: 22/08/2025



Frithwood Avenue, Northwood
Approximate Gross Internal Area
91 Sq M/971 Sq Ft



Ground Floor



First Floor

Please note that the location of doors, windows and other items are approximate and this floorplan is to be used for illustrative purposes only. Unauthorized reproduction is prohibited.

