



A luxury home situated on a gated private road
Kewferry Drive, Northwood, Middlesex HA6 2PA



Asking Price: £5,250 pcm

A luxury home situated on a gated private road

Kewferry Drive, Northwood, Middlesex HA6 2PA

• LIVING ROOM • DINING ROOM • CONSERVATORY • STUDY • KITCHEN & SEPARATE UTILITY ROOM • PLAY ROOM • FIVE BEDROOMS (THREE WITH ENSUITE FACILITIES) • FAMILY BATHROOM • DRIVEWAY & GARAGE • REAR GARDEN • UNFURNISHED

Description

A beautifully balanced luxury home situated in one of Northwood's premier residential settings. The property is set in a highly regarded private road enjoying well balanced accommodation over three floors boasting five bedrooms, four bathrooms and multiple reception rooms. The house is approached via a carriage driveway providing off street parking for several vehicles and an integrated garage. To the rear of the property is a large and secluded garden providing the perfect space for outside entertaining.

Location

Northwood provides a range of shopping facilities including Waitrose supermarket, a variety of restaurants and other amenities with the Metropolitan Line station providing access to Baker Street and the City. There is a plethora of state and private schooling together with a wide choice of recreational facilities, which include golf courses and fitness centres. The M1, M40 and M25 motorways are also accessible.





Additional Information

- Local Authority: London Borough of Hillingdon
- Council Tax Band: H
- Energy Efficiency Rating: Band D
- Available Date: 09/06/2020

Energy Efficiency Rating			Environmental Impact (CO ₂) Rating		
	Current	Potential		Current	Potential
Very energy efficient - lower running costs			Very environmentally friendly - lower CO ₂ emissions		
(92-100) A			(92-100) A		
(81-91) B			(81-91) B		
(69-80) C			(69-80) C		
(55-68) D	66	66	(55-68) D	64	64
(39-54) E			(39-54) E		
(21-38) F			(21-38) F		
(1-20) G			(1-20) G		
Not energy efficient - higher running costs			Not environmentally friendly - higher CO ₂ emissions		
England & Wales EU Directive 2002/91/EC			England & Wales EU Directive 2002/91/EC		

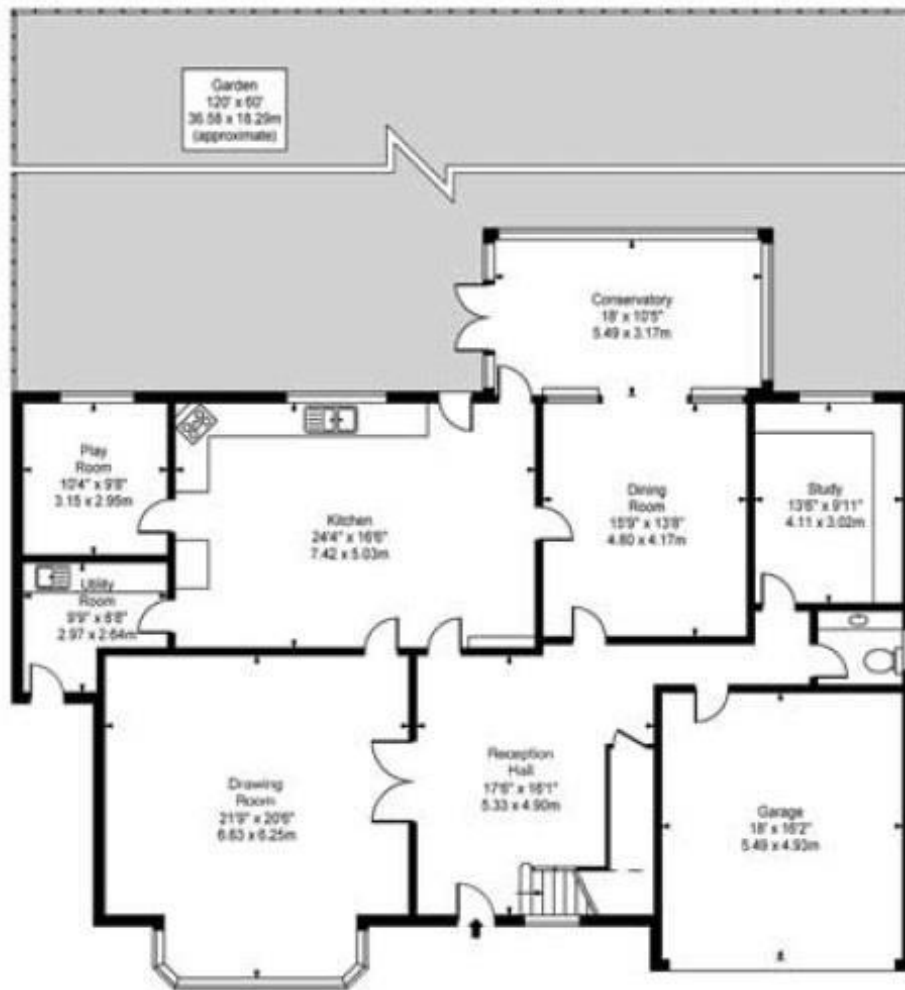
The energy efficiency rating is a measure of the overall efficiency of a home. The higher the rating the more energy efficient the home is and the lower the fuel bills will be.

The environmental impact rating is a measure of a home's impact on the environment in terms of carbon dioxide (CO₂) emissions. The higher the rating the less impact it has on the environment.

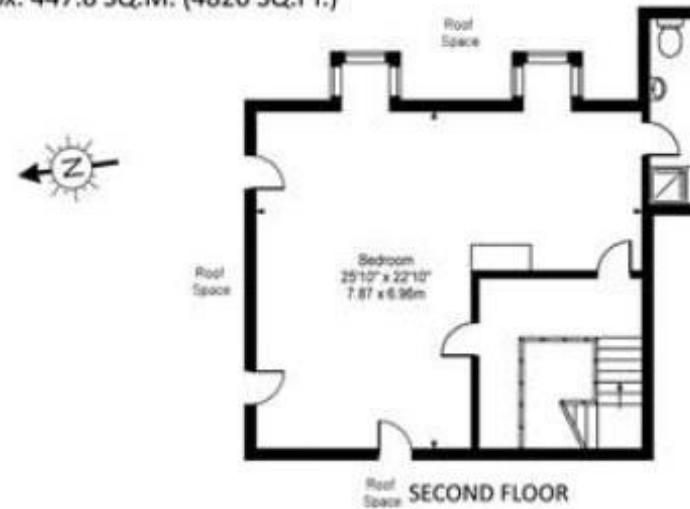


2 Kewferry Drive, Northwood, Middlesex

Total Internal Floor Area Approx. 447.8 SQ.M. (4820 SQ.FT.)



GROUND FLOOR



SECOND FLOOR



FIRST FLOOR

ROBSONS

3 Maxwell Road, Northwood, Middlesex HA6 2XY
T: 01923 822211 F: 01923 820783 E: lettings@robsonswb.com



Robsons Residential Lettings Limited is a company registered in England and Wales and its registered office is at 23 Church Street, Rickmansworth, Hertfordshire WD3 1DE
Registered Number - 07557114 VAT Registered No - 211 239 453